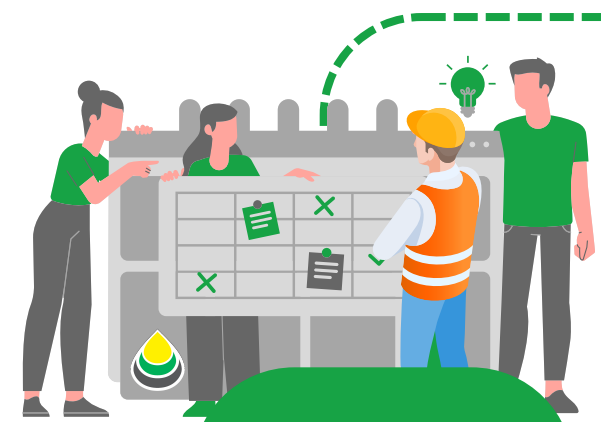
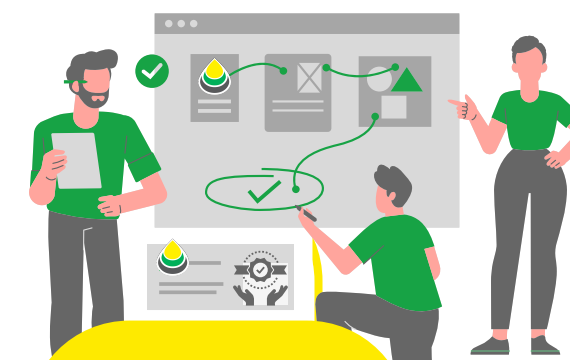


# How we built a Safety Culture from **Inside-Out**



## 1 Learn Safe

- Identify** hazards & **Manage** risks
- Monitor, review & report** HSSE performance
- Provide** safe work procedures
- Engage** employees & contractors



## 2 Plan Safe

In-house engineering team to ensure all solutions adhere to Australian Standards

- Tailored** preventative maintenance programs
- ✓ 10 yearly inspections
- Internal** quality assurance systems

**Maximum** Efficiency for Reduced Downtime

## 3 Make Safe



Skilled & Industry trained team of **professionals**

- ✓ Regular training
- ✓ Accreditations

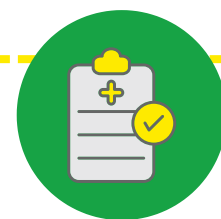
**Environment** conscious

Focus on using only **high quality** tools, parts and accessories

**Making** every drop of **diesel count** !



## 4 Be Safe



The **physical** and **mental wellbeing** of our employees

- ✓ Health Checks
- ✓ Flu shots
- ✓ Employee assistance program

**Flexible** work hours for **work-life** balance!



- ✓ More **Focus**
- ✓ More **Commitment**
- ✓ Better **Collaboration**

**Zero** tolerance for any activity which compromises **safety**!



“ **EVERYONE HAS THE RIGHT TO HIT THE STOP BUTTON!** ”

**Mark Westbrook**  
Founder and Chair Fuelfix & Tanks2Go